

PCB Mount Thermocouple Connector Socket



Features

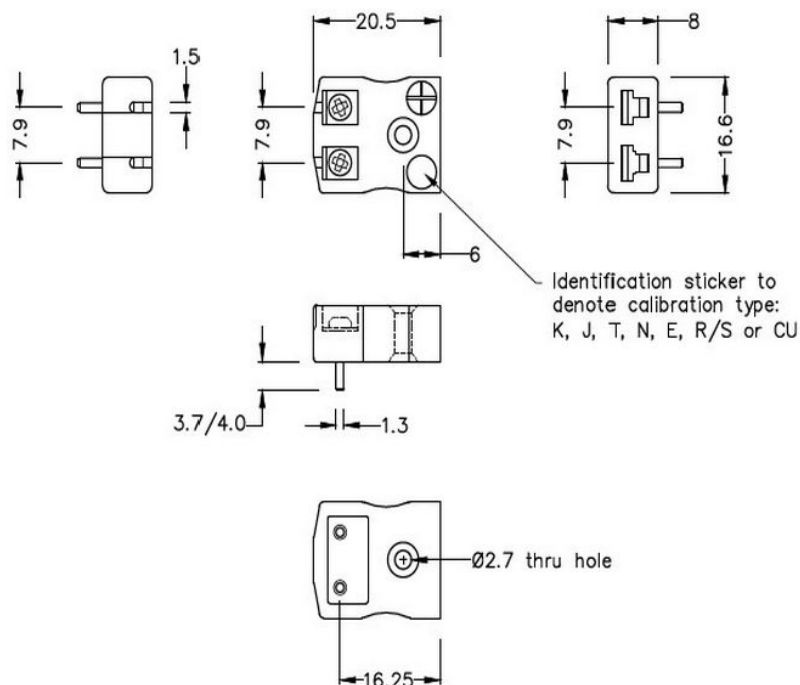
- Specially designed for PCBs, solid pins for direct board mounting & provision for CJC sensor
- Versatile, high quality circuit board mounting miniature socket
- PCB Mounting Thermocouple Connector Socket AM-K-PCB Type K ANSI



Specification

Sensor Type	K
Connector Size	Miniature
Connector Type	PCB Socket
Colour	Yellow
Max. Temperature	220 °C
+Positive Contact	NiCr
-Negative Contact	NiAl
Standards Met	BS EN 50212:1997; RoHS

Drawing



Miniature PCB Socket

(dimensions in mm)

Art. Nr.
RND 410-00181